

FABRICATED TRANSITIONS

Available in aluminum, carbon steel, and stainless steel, fabricated transitions are available to aid customers in mounting Vortex gates and diverters to existing equipment. As required, transitions can address custom flange to flange dimensions. They may also be fabricated to contain flanges that match special bolt patterns, tube stubs with or without sock beads, or blind flanges that allow “in the field” hole placement and installation.

ROUND TO SQUARE TRANSITIONS



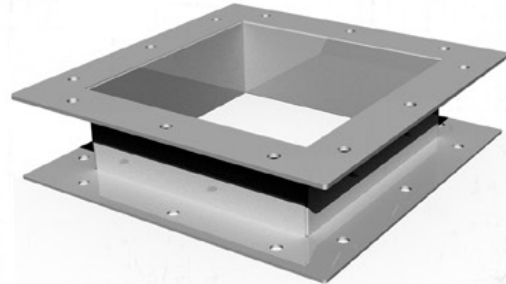
Allows the inlet of a square gate to match up with equipment containing a round discharge

SQUARE TO ROUND TRANSITIONS



Allows the discharge of a square gate to match up with equipment containing a round inlet

SQUARE TO SQUARE SPACERS



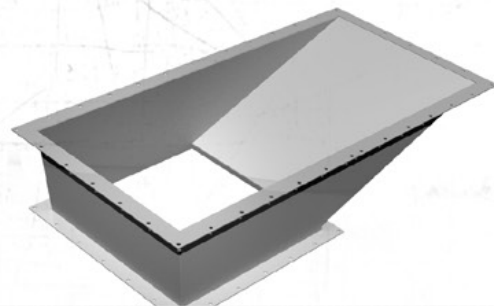
Utilized to take up extra space caused by previous equipment removal or to address different flange hole mounting patterns

FLAT (COMPANION) FLANGES



Utilized to match a standard Vortex gate flange or bolt hole pattern - may be ordered for mounting to existing equipment

RETURN PANS



Mounted underneath an Aggregate Gate and is used for applications requiring zero external material leakage

For a complete list of specifications, modifications, dimensional drawings and measurements, visit WWW.VORTEXVALVES.COM