

# TLD DIVERTER



The Vortex TLD Diverter is designed for use in gravity flow applications handling abrasive materials such as coal and frac sand. Material from one source can be diverted to two destinations. The TLD Diverter offers replaceable wear liners for added abrasion resistance and a removable access panels for internal inspection, cleaning and maintenance.

☒ GRAVITY FLOW

☐ DILUTE PHASE PNEUMATIC CONVEYING

☐ DENSE PHASE PNEUMATIC CONVEYING

## FEATURES



Handles aggregates, rock, glass cullet, sand, refractory mix and clinker



Leading edge of blade protected from material flow



Wear compensating shaft seal preventing leakage



Removable access door for internal inspection, cleaning, and maintenance



Positive seal of dust and fine powders



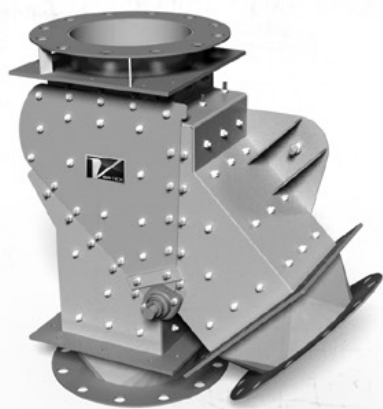
Replaceable abrasion resistant liners



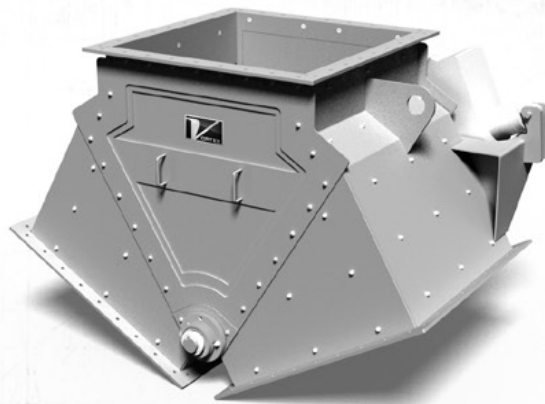
Material construction options available



Standard sizes: 16" - 36"  
Contact us for custom sizes



**2 WAY - STRAIGHT LINE**



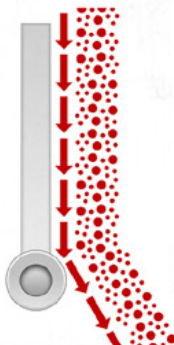
**2 WAY - WYE LINE**

OPTIONS

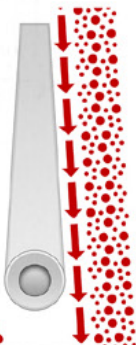


Wear compensating blade seal reduces dusting

ORIGINAL



A - STYLE



"A" style blade reduces wear to shaft and eliminates "ski jump" effect



Abrasion resistant steel or hard polymer liners available

DETAILS



12" x 18 (309mm x 457mm)  
TLD Diverter for handling silica sand



56" (1,422mm) TLD Diverter  
handling coal



62" (1,575mm) TLD Diverter  
handling glass cullet

APPLICATIONS