

# IRIS VALVE

The Vortex Iris Valve is designed specifically to handle dry bulk solids in gravity discharge of free-flowing material from bins, bulk bags, chutes, and hoppers. The Vortex Iris Valve is designed with stainless steel control rings, metal handle and trigger lock, and nylon shim for durability and smooth actuation. A form fitted fabric sleeve provides a dust tight seal and product barrier that prevents material leakage to atmosphere.

☒ **GRAVITY FLOW**

☐ **DILUTE PHASE PNEUMATIC CONVEYING** (Pressure or Vacuum)

☐ **DENSE PHASE PNEUMATIC CONVEYING**

## FEATURES

-  Handles powders, granules and pellets
-  Ideal for bulk bag unloading
-  Smooth actuation with no binding or galling
-  Unobstructed opening
-  Fabric sleeve prevents material degradation
-  Stainless steel control ring
-  Material construction options available
-  Standard sizes: 4" - 18"  
Contact us for custom sizes

## OPTIONS



**INFINITE POSITION**



**QUICK LOCK**



**TOTE HANDLE**

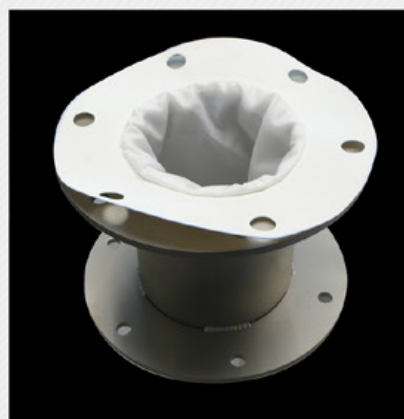
## DETAILS



Preset positions for quick adjustments of material flow

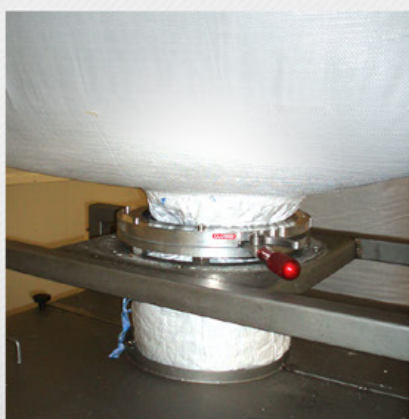


Stainless steel control ring increases torque when closing on a column of material



Optional replaceable wear liner reduces sleeve contact and extends valve life

## APPLICATIONS



12" (305mm) Iris Valve on bulk bag discharge



18" (457mm) Iris Valve on bulk bag discharge



15" (381mm) Iris Valve on bulk bag discharge

For a complete list of specifications, modifications, dimensional drawings and measurements, visit [WWW.VORTEXVALVES.COM](http://WWW.VORTEXVALVES.COM)