

ORIFICE GATE

The Vortex Quantum Orifice Gate is specifically engineered to handle dry bulk solids in gravity flow, dilute phase, or vacuum conveying systems with pressures up to 15 psig (1 barg). Traditional slide gates and butterfly valves commonly allow packing of material which prevents positive air and material shutoff.

☒ **GRAVITY FLOW**

☒ **DILUTE PHASE PNEUMATIC CONVEYING** (Pressure or Vacuum)

☐ **DENSE PHASE PNEUMATIC CONVEYING**

FEATURES



Handles powders, granules and pellets



Mechanically self cleans on opening stroke



No pinch points or exposed moving parts for safe operation



Wear compensating hard polymer seals



Unobstructed opening



Seals protected from blast abrasion



Serviceable while in-line



Material construction options available



Standard sizes: 2" - 16"
Contact us for custom sizes

OPTIONS



STUDDED



ANSI / DIN

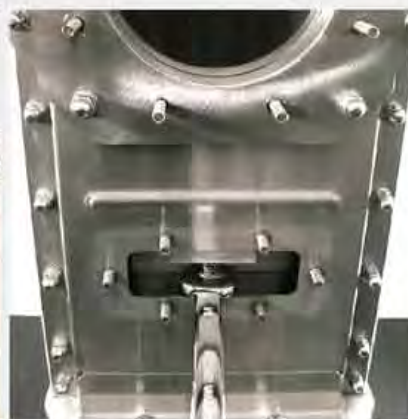


-P

DETAILS



Shim removal for seal
adjustment while valve is in-line



Blade adjustment through
front access panel



Mechanically self cleans
on opening stroke

APPLICATIONS



10" (254mm) Quantum Orifice
Gate handling cement powder



Hand crank Quantum Orifice Gate
with ANSI flange



12" (305mm) Quantum Orifice Gate
handling polyethylene resin powder

For a complete list of specifications, modifications, dimensional drawings and measurements, visit WWW.VORTEXVALVES.COM